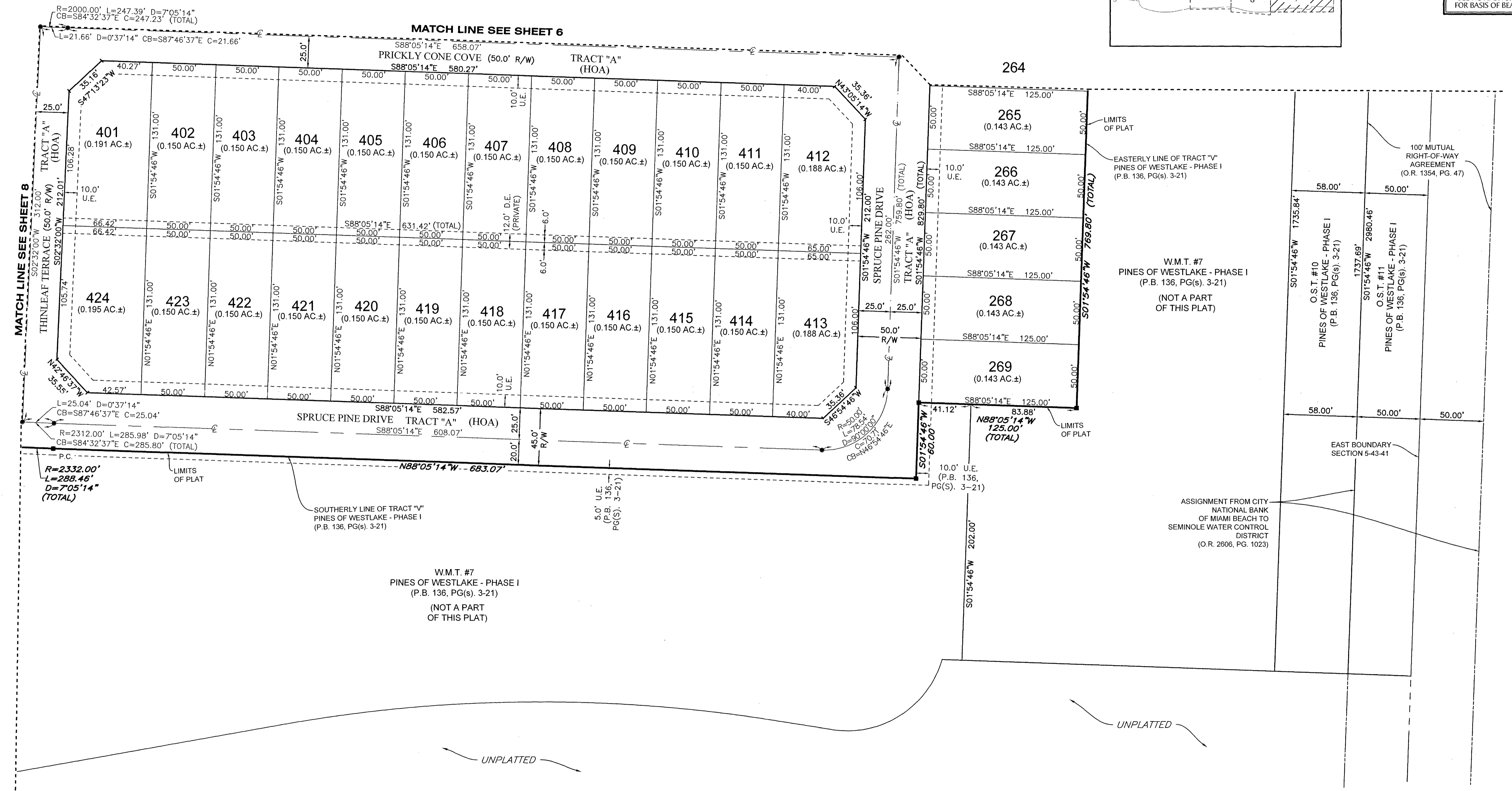
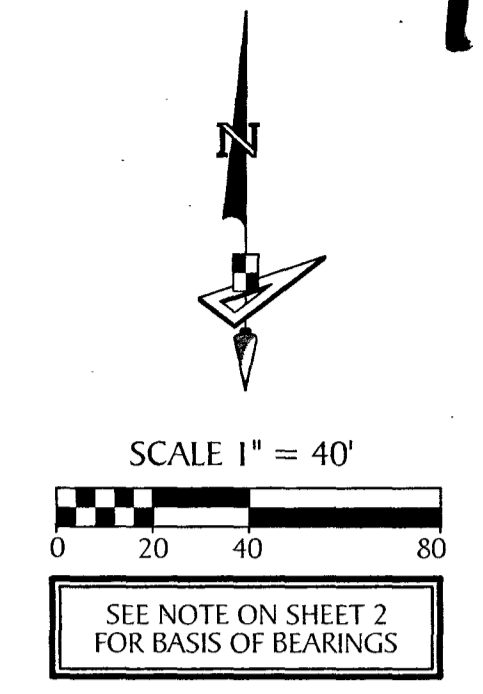
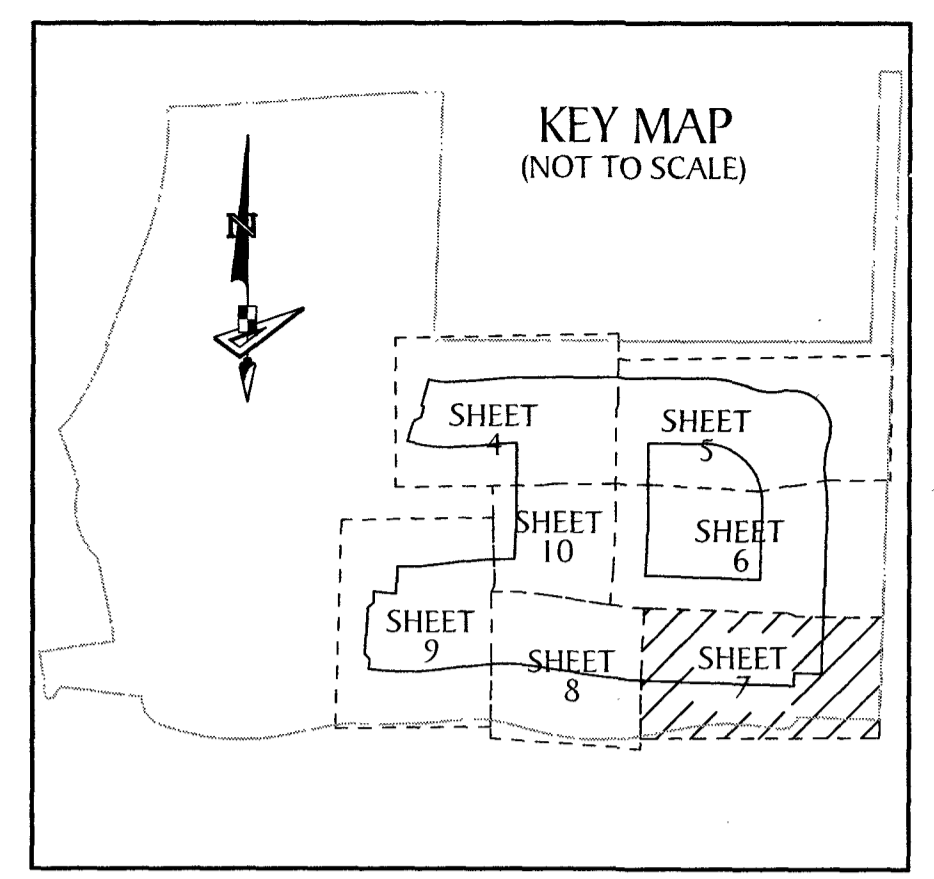


PINES OF WESTLAKE - PHASE II

A SUBDIVISION IN SECTION 5, TOWNSHIP 43 SOUTH, RANGE 41 EAST, CITY OF WESTLAKE,
PALM BEACH COUNTY, FLORIDA, BEING A REPLAT OF TRACT "V", PINES OF WESTLAKE - PHASE I,
PLAT BOOK 136, PAGES 3 THROUGH 21, INCLUSIVE, PUBLIC RECORDS OF PALM BEACH COUNTY, FLORIDA.



<p>P.O.B. --- POINT OF BEGINNING</p> <p>P.O.C. --- POINT OF COMMENCEMENT</p> <p>P.B. --- PLAT BOOK</p> <p>D.B. --- DEED BOOK</p> <p>O.R./O.R.B. --- OFFICIAL RECORDS BOOK</p> <p>PG./PG(s) --- PAGE(S)</p> <p>NAD --- NORTH AMERICAN DATUM</p> <p>W.M.T. --- WATER MANAGEMENT TRACT</p>	<p>O.S.T. --- OPEN SPACE TRACT</p> <p>P.B.C. --- PALM BEACH COUNTY</p> <p>U.E. --- UTILITY EASEMENT</p> <p>D.E. --- DRAINAGE EASEMENT</p> <p>L.M.A.E. --- LAKE MAINTENANCE ACCESS EASEMENT</p> <p>5-43-41 --- SECTION-TOWNSHIP-RANGE</p> <p>R --- RADIUS</p> <p>L --- ARC LENGTH</p>	<p>D --- DELTA ANGLE</p> <p>CB --- CHORD BEARING</p> <p>C --- CHORD</p> <p>N.T.I. --- NON-TANGENT INTERSECTION</p> <p>N.T.C. --- NON-TANGENT CURVATURE</p> <p>P.C. --- POINT OF CURVATURE</p> <p>P.T. --- POINT OF TANGENCY</p> <p>C.C. --- COMPOUND CURVATURE</p>	<p>R.C. --- REVERSE CURVATURE</p> <p>R.I. --- RADIAL INTERSECTION</p> <p>R/W --- RIGHT-OF-WAY</p> <p>(R) --- RADIAL</p> <p>(NR) --- NON-RADIAL</p> <p>HOA --- HOMEOWNERS ASSOCIATION</p> <p>S.I.D. --- SEMINOLE IMPROVEMENT DISTRICT</p>	<p>PRM --- PERMANENT REFERENCE MONUMENT</p> <p>● --- PERMANENT CONTROL POINT</p> <p>□ --- FOUND PERMANENT REFERENCE MONUMENT</p> <p>■ --- SET 4"x4" CONCRETE MONUMENT WITH 2" ALUMINUM DISK STAMPED "PRM LB 7768"</p>
---	--	--	--	---

GeoPoint
Surveying, Inc.

4152 W. Blue Heron Blvd. Phone: (561) 444-2720
Suite 105 www.geopointsurvey.com
Riviera Beach, FL 33404 Licensed Business Number LB 7768

SHEET 7 OF 10 SHEETS